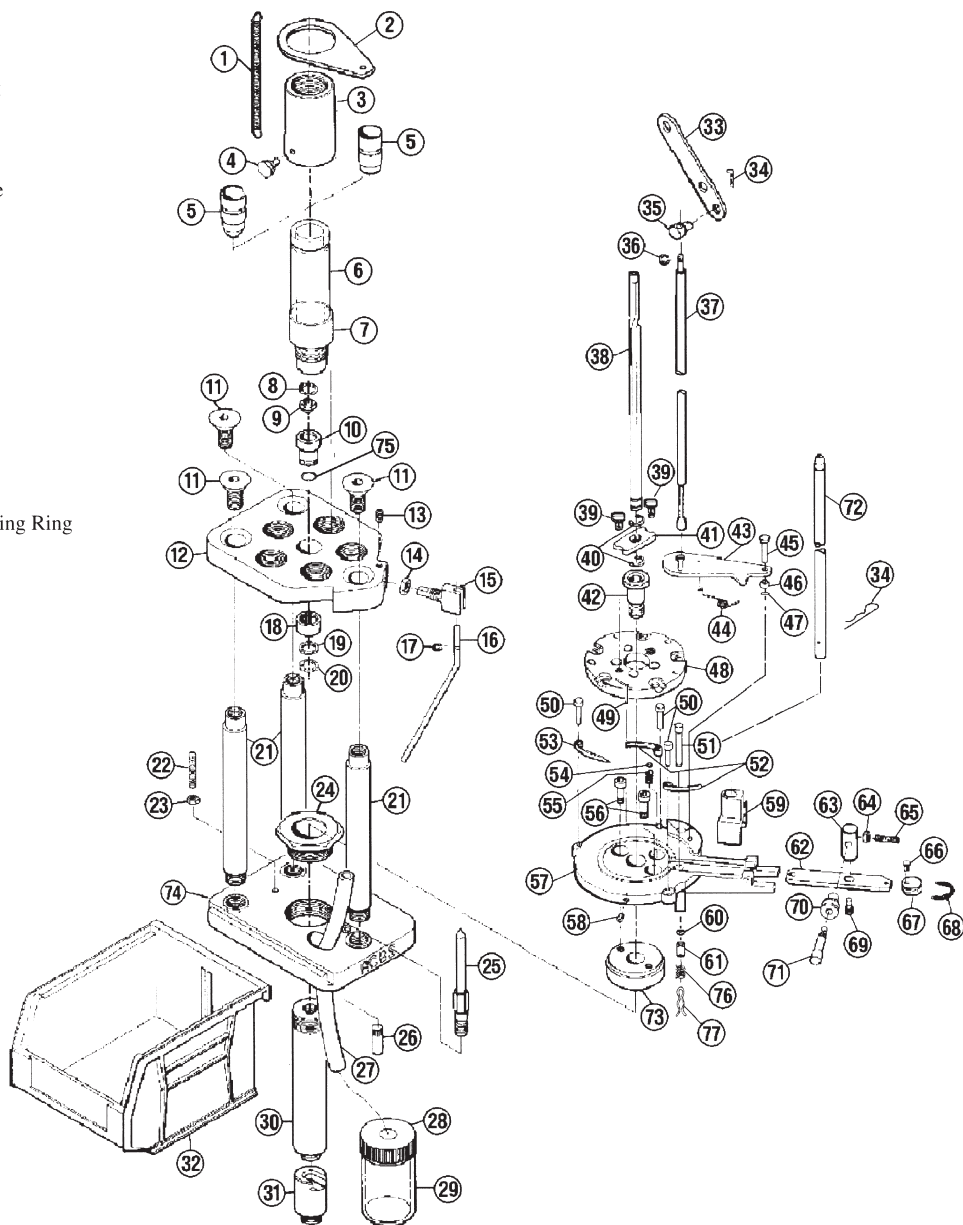


# RELOADING PRESSES

## 87807 PIGGYBACK II

Key	Part #	Description
1	88753	Powder Measure Return Spring
2	88757	Return Spring Tab
3	88724	Quick Change Collar
4	88052	Collar Lock Screw
5	88736	Powder Drop Tube, Small Rifle
5	88784	.17 Cal. Drop Tube
5	88795	Powder Drop Tube, Pistol
6	88794	Powder Measure Adaptor Tube
7	88739	Powder Measure Male Adaptor
8	87654	Retaining Ring
9	87650	Nylon Index Bushing (2)
10	87651	Inner Race
11	88032	3/8-16 x 3/4 FHS
12	88001	Top Plate
13	09099	Setscrew 10-32x1/4
14	88027	Hex Nut 3/8-24
15	88026	Cam Wire Clip
16	88060	Cam Wire Assembly w/ Retaining Ring
17	87670	Retaining Ring
18	87653	Clutch Bearing
19	87658	Clutch Bearing Washer
20	09143	Retaining Ring
21	88793	Support Rod (3)
22	88033	Setscrew 1/4-28x1 1/4
23	87175	Hex Nut 1/4- 28
24	88007	Piggyback Lock Nut
25	88718	Index Locating Pin
26	88011	Rock Chucker Locating Pin
27	88028	Spent Primer Tube
28	87178	Spent Primer Bottle Cap
29	87177	Spent Primer Bottle
30	88005	Upper Ram
31	88004	Ram Adaptor
32	88031	Ammo Catcher Box
33	87677	Cylinder Handle
34	09599	Cotter Pin
35	87679	Connecting Yoke
36	87670	Retaining Ring
37	88792	Case Detection Push Rod
38	88785	Index Rod
39	88720	Knurled Screw 8-32 (2)
40	87657	Retaining Ring (2)
41	88003	Connecting Plate
42	88009	Shoulder Bolt
43	88726	Case Detection Arm
44	88729	Case Detection Spring
❖	88048	Primer Follower
❖	88049	Lock Nut / Die Wrench
❖	87501	Hex Lock Ring Assembly, 7/8-14 (3)
❖	88051	Hex Key Wrench, .050
45	88775	Case Detection Arm Pin
46	88776	Detection Arm Pin Sleeve
47	88043	Screw 4-40 x 1/4
48	*	Five Station Shell Plate
49	88038	Case Eject Spring
50	88717	Case Retaining Spring Plug (3)
51	7-88797	Primer Plug, Large
51	7-88796	Primer Plug, Small
52	88751	Station 2 & 4 Case Retaining Spring
53	88752	Station 5 Case Retaining Spring
54	87152	Index Ball
55	88037	Index Ball Spring
56	88790	Cap Screw 1/4-28x1/2 (2)
57	88786	Shell Plate Holder
58	09509	Setscrew 8-32x1/4



Key	Part #	Description
59	88044	Primer Dispenser, Small
59	88045	Primer Dispenser, Large
60	7-88696	Primer Bushing
61	7-88697	Primer Boss
62	88015	Transfer Bar, Small
62	88016	Transfer Bar, Large
63	88021	Roller Carrier (2)
64	88035	Hex Nut 8-32 (2)
65	88034	SHSS 8-32 3/4 X 1/4
66	88018	Spring Retainer Rivet (2)
67	88017	Spring Retainer (2)
68	88019	Return Spring
69	87687	Cap Screw 10-32 x 1/4 (2)
70	88020	Cam Rollers (2)
71	88737	Roller Pins (2)
72	09582	Primer Tube, Small
72	09581	Primer Tube, Large
73	88791	Shell Plate Holder Adaptor
74	88787	Bottom Plate

Key	Part #	Description
75	87652	Wave Washer
76	88014	Primer Plug Spring
77	88042	Primer Plug Clip
❖	88060	Cam Wire Assembly (key #'s 16 & 17)
❖	88062	Roller Carrier Assembly (key #'s 63 & 71)
❖	88788	Shell Plate Holder Assembly (key #'s 50, 51, 52, 53, & 57)
❖	88064	Top Plate Assembly (key #'s 8,9,10,12,18,19, & 20)
❖	88065	Primer Transfer Roller Assembly (key #'s 63, 64, 65, 66, 67, 69, 70, & 71)
❖	86857	Rock Chucker Piggyback Handle Assembly (Optional)
❖	09534	Hex Key Wrench, 5/64
❖	09635	Hex Key Wrench, 3/32
❖	86756	Hex Key Wrench, 5/16
❖	88055	Hex Speed Wrench, 5/16

❖ Not shown.

\* See current Shooters Catalog for this item.